

---

# Studio Theatre Technical Specification

The Peoples Theatre Studio offers a versatile 'black-box' theatre space for performance, rehearsal and other events.

Depending upon the selected format and purpose, the studio accommodates an audience for performance of approx. 70-80 persons.

The flexibility of audience seating arrangements allows a variety of possible performance playing configurations, or if preferred, a clear 'flat-floor' space for a variety of 'non-performance' activities and sessional events.

The Studio can be offered as being technically-supported (by negotiation) or simply as a 'dry hire' as required.

General and public access to the studio is via the main theatre entrance leading directly from the venue's ground-floor Main Foyer, Bar and Reception area through a short double-width corridor into to a small studio 'lobby'.

Production 'get-in' access is through the main entrance as above, or if practical, through a stepped and turned single-width entrance from the side of the building.

## Main Stage Floor Dimensions

Performance access is via entrances directly into the studio space from the studio lobby.

Double, inward opening 'fire-doors' 1.60m overall width leading from the studio dressing room area via the studio entrance lobby.

One outward opening single 'fire-door' 0.80m width; one from the studio dressing room area via the studio entrance lobby (as above).

One outward opening single 'fire-door' on the opposite side of the studio, accessible via a longer route leading from the main-stage dressing room facilities (by arrangement).

All entrance doors are 2m high.

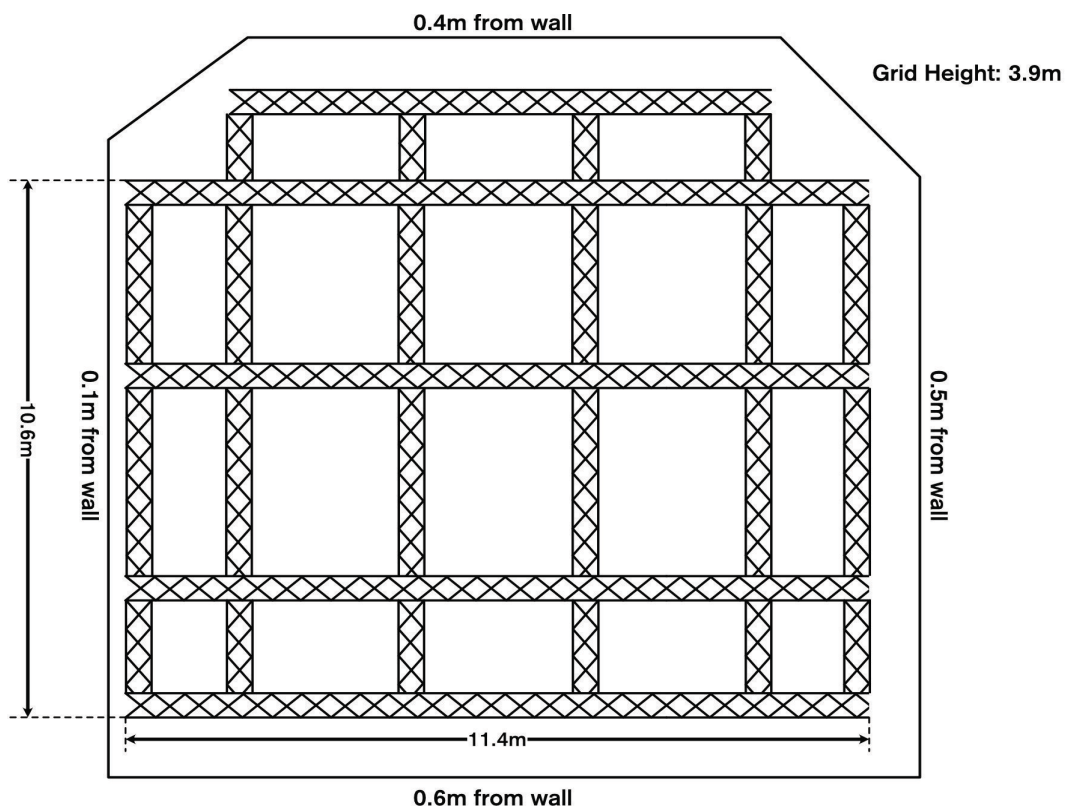
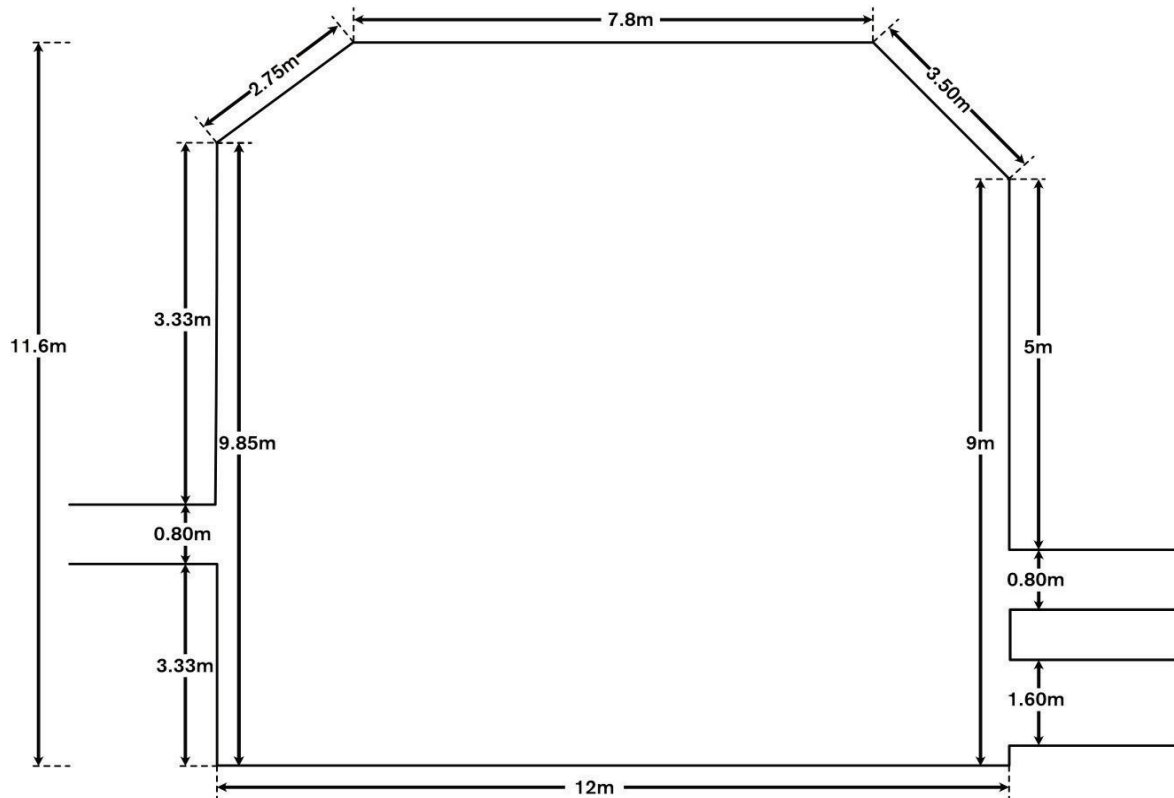
Temporary 'black' cloth masking for entrance/exits can be installed by arrangement in order to provide required cross-overs accordingly. (There is no integral wing-space).

The studio floor is laid with a black Harlequin rubberised 'dance-floor' surface. (No screw/fixing of set structure to the floor is possible) and it is requested that all structures are adequately 'footed' to avoid damage.

The box-truss overhead grid is approx. 3.90m from floor covering total floor area allowing the L.X. rigging positions to be fully flexible. (see diagram).

Light-weight structure suspension is possible (weight to be determined/agreed prior to installation).

# Studio Theatre Technical Specification



---

# Studio Theatre Technical Specification

## Stage Provision

F.O.H. communication and S.M. comms. is currently via radio and head-set system.

Studio seating is provided through a system of individual chairs as required. These can be easily linked to form conjoined rows as required. Steel-deck rostra can be utilised by arrangement to provide raised levels as required.

The studio dressing room and facilities are currently under construction, however, an adjacent temporary 'holding/ quick-change area can be arranged if necessary. Access to the venue's main-stage fully serviced dressing rooms can be offered (at short distance) with direct access to the studio space.

## Lighting

Access to the overhead grid is via a mobile 'tower' platform and /or Zargee A-frame ladder.

48 ways of dimming as a default patch. (ETC Coloursource 215 DMX). Additional ways can be configured by arrangement if required.

All lanterns rigged require TRS cabling from the in-situ 6-way patch bays (15A) within the grid.

SOCAPEX connectivity serviced from grid height break-outs.

3 Floor-level break-outs offer further connectivity. (SOCAPEX/13A/DMX/XLR)

Lighting control is through a memory/programmable console.

## Sound

The studio is equipped with 4 flown 500w (peak 1000w) speakers within the overhead grid, one at each corner, offering full room 'surround' sound or individually selected speaker configuration.

Amplification is via pre-amp and amplifiers taking analogue XLR or Cat5/6 data connectivity.

Sound control is through a 6ch Behringer analogue mixer (larger capacity mixer can be arranged).

A small stock of XLR cable is available.

Mics/monitors can be supplied as required/requested by prior arrangement. (re-charge)

# Studio Theatre Technical Specification

## Lantern Stock

8 x 750w Fresnels (barn-doors/colour frames etc)

4 1k Fresnels (barn-doors/colour frames etc)

4 x 750 profiles (shutters/gobo size B)

6 1k Parcans.

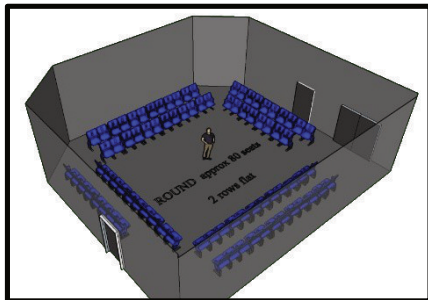
A variety of further lanterns can be requested as required and supplemented from the extensive main house stock. (note;studio 'house-lights' need to be positioned, configured, rigged and programmed accordingly).

## Lighting/Sound Control

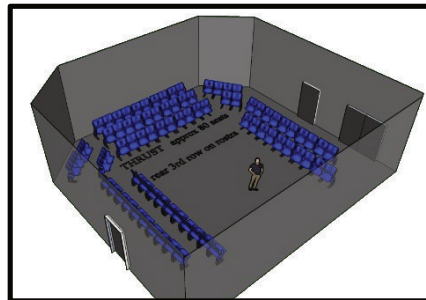
Operating positions for Lighting and Sound are currently directly from studio floor level and placed according to the playing/seating configuration.

## Seating/Stage Arrangement

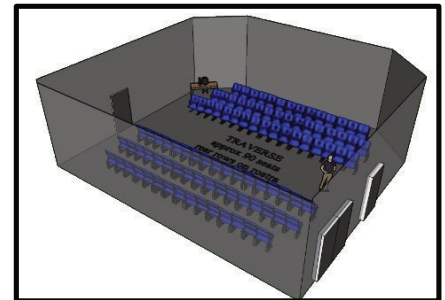
The seating within our studio is flexible to accommodate various dramatic arrangements. Below are examples of potential uses.



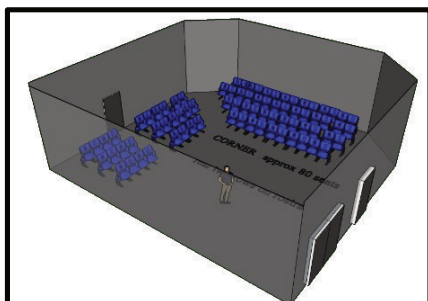
In The Round



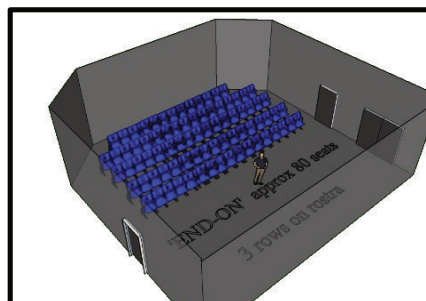
Thrust



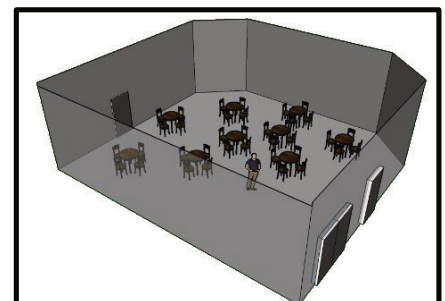
Transverse



Corner



End On



Cabaret